

## Table of contents

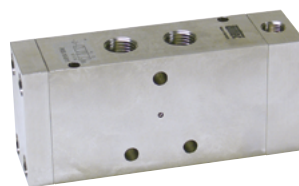
**Series ICK-09**

**Page 6-02**



**Series PKX-10**

**Page 6-06**



**Series ICK-10**

**Page 6-02**



**Series ICKN-55**

**Page 6-08**



**Series KMX-09**

**Page 6-04**



**Series KNX-55**

**Page 6-10**



**Series KMX-10**

**Page 6-04**



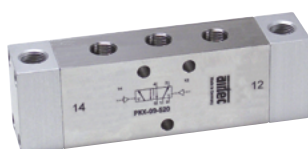
**Series PNX-55**

**Page 6-12**



**Series PKX-09**

**Page 6-06**



**Accessories and spare parts**

**Page 6-14**



## Series ICK-09 and ICK-10

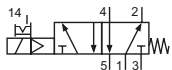
### Technical details

<b>Connection</b>	ICK-09: G1/8 ICK-10: G1/4
<b>Nominal size</b>	ICK-09: 6 mm ICK-10: 9 mm
<b>Temperature range</b>	-30°C ... +80°C
<b>Medium</b>	Filtered, oil-free and dried compressed air according to ISO 8573-1:2010, Class 7:2:4, instrument air, free of aggressive additives. Alternatively the pressure dew point must be at least 10°C below lowest occurring ambient temperature.
<b>Materials</b>	Body: Al (anodized), seals: FKM and PU, inner parts: Al, stainless steel and brass
<b>Protection</b>	IP 65 according to EN 60529

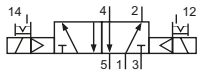


Electrically operated spool valve. The manual override is detent and is operated by screwdriver.

### 5/2-way valves

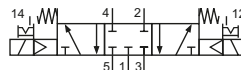


ICK-09-511-HN-xxx  
ICK-10-511-HN-xxx  
5/2-way, single solenoid, mechanical spring return



ICK-09-520-HN-xxx  
ICK-10-520-HN-xxx  
5/2-way, double solenoid

### 5/3-way valves



ICK-09-530-HN-xxx  
ICK-10-530-HN-xxx  
5/3-way, center position closed

Please complete: xxx = electrical option

### Electrical options

Nominal voltage	Power consumption	Specifics	Plug connection <sup>*1</sup>	-xxx Manual override on same side of ports	
				2 and 4	1, 3 and 5
24 V DC	4.2 W		Form B industrial norm	-F42	-F12

<sup>\*1</sup> Plug socket not included, suitable plug sockets see page 6-14.

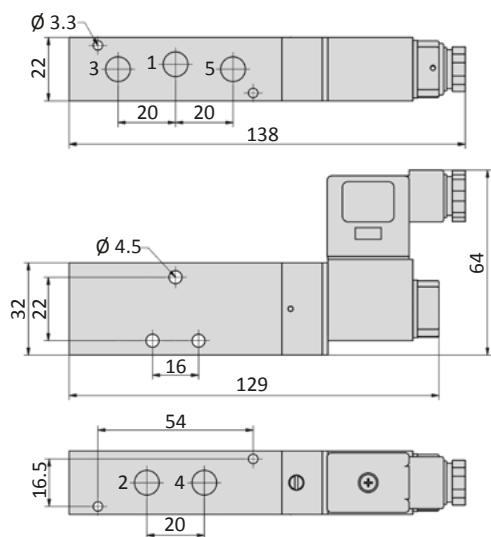
### Technical data

Model-no.:	ICK-09-511	ICK-09-520	ICK-09-530	ICK-10-511	ICK-10-520	ICK-10-530
<b>Operating pressure (bar)</b>	3 ... 8	3 ... 8	3 ... 8	2.5 ... 8	2.5 ... 8	3 ... 8
<b>Pilot pressure (bar)</b>	3 ... 8	3 ... 8	3 ... 8	2.5 ... 8	2.5 ... 8	3 ... 8
<b>Flow rate (l/min)</b>	810	950	680	1800	2100	1500
<b>Response time (ms) at 6 bar</b>	on: 13 off: 28	on: 15 off: 15	on: 14 off: 16	on: 16 off: 27	on: 18 off: 18	on: 16 off: 22
<b>Weight (kg)</b>	0.231	0.330	0.330	0.470	0.630	0.630

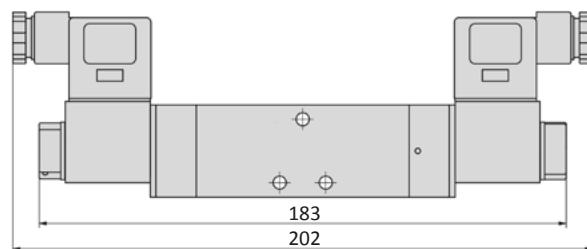
## Series ICK-09 and ICK-10

### Dimensions

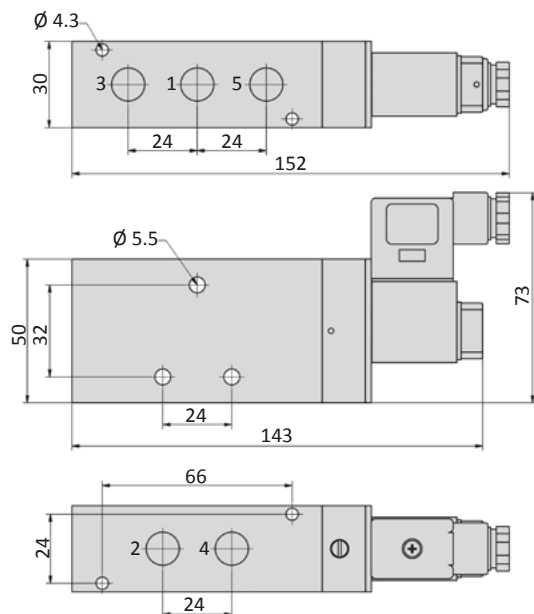
#### ICK-09-511-HN



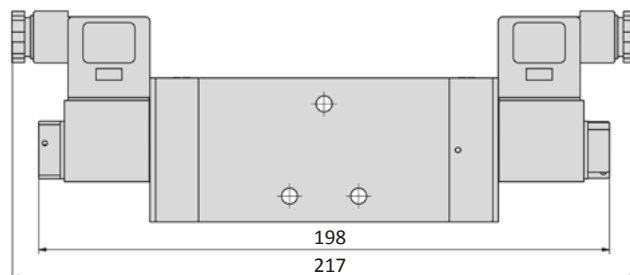
#### ICK-09-520-HN, ICK-09-530-HN



#### ICK-10-511-HN



#### ICK-10-520-HN, ICK-10-530-HN



1 = pressure inlet  
2,4 = outlets  
3,5 = exhausts

Plug socket (not included in scope of delivery) can be repositioned by 180°. Solenoid coil can be repositioned.

### Accessories



Plug sockets: page 6-14



Manifolds and accessories: page 4-21

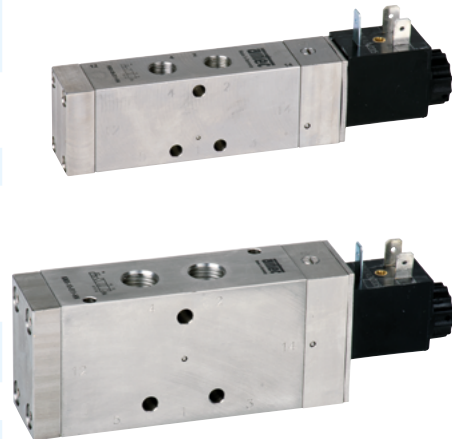


# Series KMX-09 and KMX-10



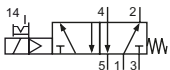
## Technical details

<b>Connection</b>	KMX-09: G1/8 KMX-10: G1/4
<b>Nominal size</b>	KMX-09: 6 mm KMX-10: 9 mm
<b>Temperature range</b>	-30°C ... +80°C
<b>Medium</b>	Filtered, oil-free and dried compressed air according to ISO 8573-1:2010, Class 7:2:4, instrument air, free of aggressive additives. Alternatively the pressure dew point must be at least 10°C below lowest occurring ambient temperature.
<b>Materials</b>	Body: stainless steel 1.4571, seals: FKM and PU, inner parts: stainless steel 1.4305
<b>Protection</b>	IP 65 according to EN 60529
	Valves in accordance with 2014/34/EU (ATEX) available. (Chapter 13)

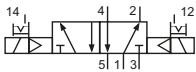


Electrically operated spool valve. The manual override is detent and is operated by screwdriver.

## 5/2-way valves

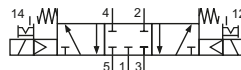


KMX-09-511-HN-xxx  
KMX-10-511-HN-xxx  
5/2-way, single solenoid, mechanical spring return



KMX-09-520-HN-xxx  
KMX-10-520-HN-xxx  
5/2-way, double solenoid

## 5/3-way valve



KMX-10-530-HN-xxx  
5/3-way, center position closed

Please complete: xxx = electrical option

## Electrical options

Nominal voltage	Power consumption	Specifics	Plug connection <sup>*1</sup>	-xxx Manual override on same side of ports	
				2 and 4	1, 3 and 5
24 V DC	4.2 W		Form B industrial norm	-F42	-F12

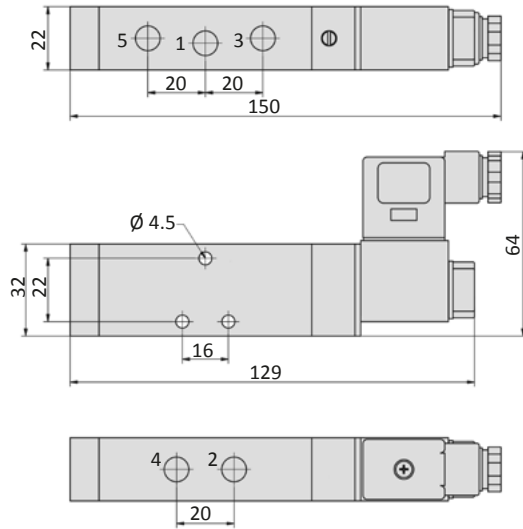
<sup>\*1</sup> Plug socket not included, suitable plug sockets see page 6-14.

## Technical data

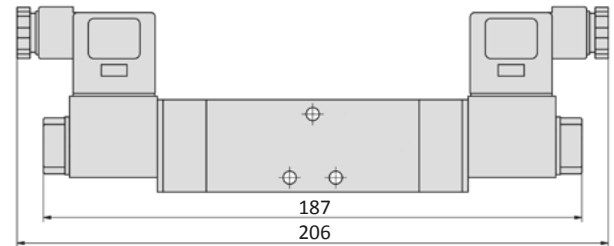
Model-no.:	KMX-09-511	KMX-09-520	KMX-10-511	KMX-10-520	KMX-10-530
<b>Operating pressure (bar)</b>	3 ... 8	3 ... 8	3 ... 8	3 ... 8	3 ... 8
<b>Pilot pressure (bar)</b>	3 ... 8	3 ... 8	3 ... 8	3 ... 8	3 ... 8
<b>Flow rate (l/min)</b>	810	950	1800	2100	1500
<b>Response time (ms) at 6 bar</b>	on: 13 off: 28	on: 15 off: 15	on: 16 off: 27	on: 18 off: 18	on: 16 off: 22
<b>Weight (kg)</b>	0.231	0.330	0.470	0.630	0.630

## Dimensions

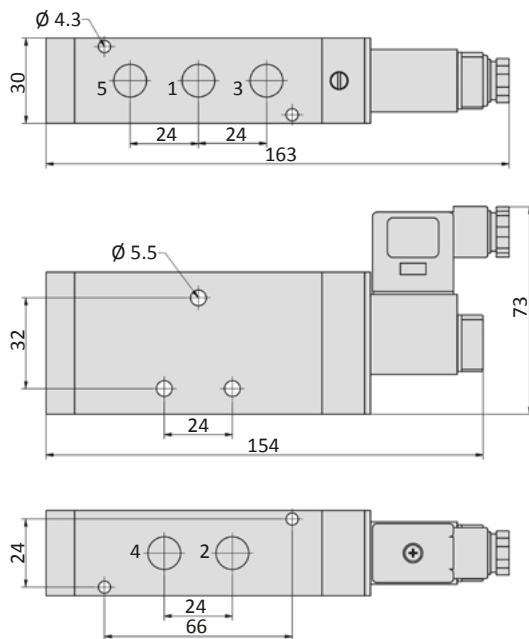
### KMX-09-511-HN



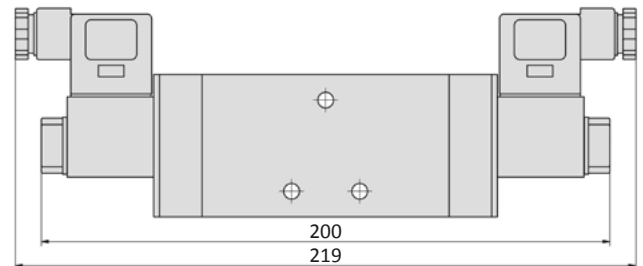
### KMX-09-520-HN



### KMX-10-511-HN



### KMX-10-520-HN, KMX-10-530-HN



1 = pressure inlet  
2,4 = outlets  
3,5 = exhausts

Plug socket (not included in scope of delivery) can be repositioned by 180°. Solenoid coil can be repositioned.

## Accessories

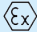


Plug sockets: page 6-14

## Series PKX-09 and PKX-10



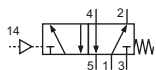
## Technical details

<b>Connection</b>	PKX-09: G1/8 PKX-10: G1/4
<b>Nominal size</b>	PKX-09: 6 mm PKX-10: 9 mm
<b>Temperature range</b>	-30°C ... +80°C
<b>Medium</b>	Filtered, oil-free and dried compressed air according to ISO 8573-1:2010, Class 7:2:4, instrument air, free of aggressive additives. Alternatively the pressure dew point must be at least 10°C below lowest occurring ambient temperature.
<b>Materials</b>	Body: stainless steel 1.4571, seals: FKM and PU, inner parts: stainless steel 1.4305
<b>Protection</b>	IP 65 according to EN 60529
	Valves in accordance with 2014/34/EU (ATEX) available. (Chapter 13)

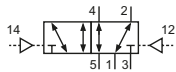


Pneumatically operated spool valve. The valve switches upon pressurization of the pilot port.

## 5/2-way valves

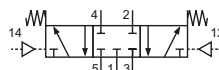


PKX-09-511  
PKX-10-511  
5/2-way, single pilot, mechanical spring return



PKX-09-520  
PKX-10-520  
5/2-way, double pilot

## 5/3-way valve



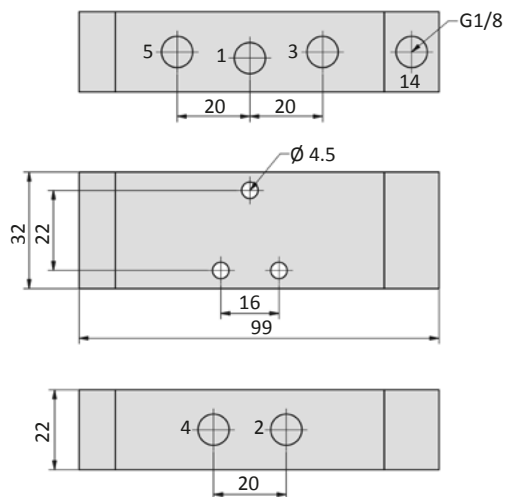
PKX-10-530  
5/3-way, center position closed

## Technical data

Model-no.:	PKX-09-511	PKX-09-520	PKX-10-511	PKX-10-520	PKX-10-530
<b>Operating pressure (bar)</b>	3 ... 8	3 ... 8	3 ... 8	3 ... 8	3 ... 8
<b>Pilot pressure (bar)</b>	3 ... 8	3 ... 8	3 ... 8	3 ... 8	3 ... 8
<b>Flow rate (l/min)</b>	1080	1110	1980	1920	1770
<b>Weight (kg)</b>	0.450	0.460	1.120	1.170	1.160

**Dimensions**

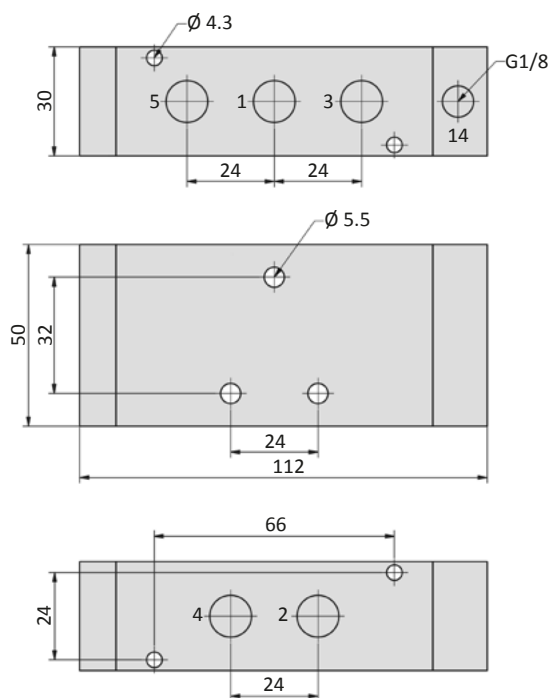
**PKX-09-511**



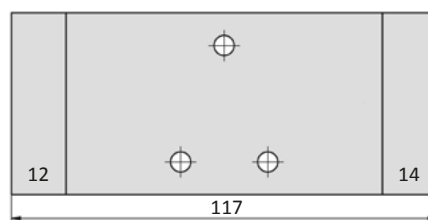
**PKX-09-520**



**PKX-10-511**



**PKX-10-520, PKX-10-530**



- 1 = pressure inlet
  - 2,4 = outlets
  - 3,5 = exhausts
  - 12,14 = pilot ports
- Pilot ports can be repositioned by 180°.

## Series ICKN-55

### NAMUR

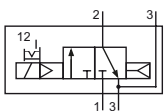
#### Technical details

<b>Connection</b>	G1/4, Namur
<b>Nominal size</b>	6 mm
<b>Temperature range</b>	-30°C ... +80°C
<b>Medium</b>	Filtered, oil-free and dried compressed air according to ISO 8573-1:2010, Class 7:2:4, instrument air, free of aggressive additives. Alternatively the pressure dew point must be at least 10°C below lowest occurring ambient temperature.
<b>Materials</b>	Body: Al (anodized), seals: FKM , inner parts: Al, stainless steel and brass
<b>Protection</b>	IP 65 according to EN 60529

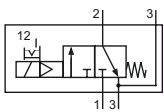


Electrically operated spool valve. The manual override is detent and is operated by screwdriver. The location pin, screws and seals are included.

#### 3/2-way valves

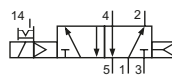


ICKN-55-310-HN-xxx  
3/2-way, single solenoid, air spring return, NC

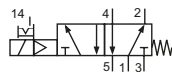


ICKN-55-311-HN-xxx  
3/2-way, single solenoid, mechanical spring return, NC

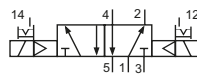
#### 5/2- and 5/3-way valves



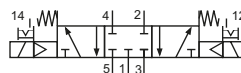
ICKN-55-510-HN-xxx  
5/2-way, single solenoid, air spring return



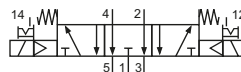
ICKN-55-511-HN-xxx  
5/2-way, single solenoid, mechanical spring return



ICKN-55-520-HN-xxx  
5/2-way, double solenoid



ICKN-55-530-HN-xxx  
5/3-way, center position closed



ICKN-55-533-HN-xxx  
5/3-way, center position exhausted

Please complete: xxx = electrical option

#### Electrical options

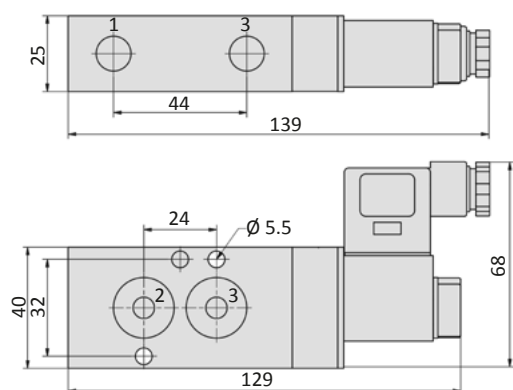
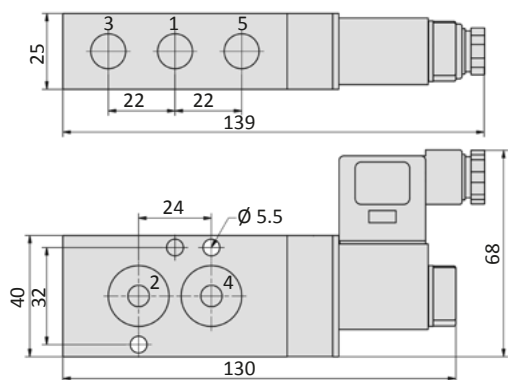
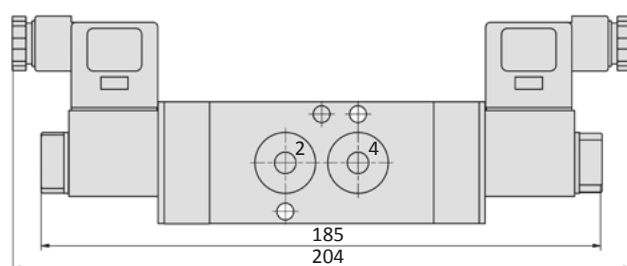
Nominal Ivoltage	Power consumption	Specifics	Plug connection*1	-xxx
24 V DC	4.2 W		Form B industrial norm	-F42

\*1 Plug socket not included, suitable plug sockets see page 6-14.



**Technical data**

Model-no.:	ICKN-55-310	ICKN-55-311	ICKN-55-510	ICKN-55-511	ICKN-55-520	ICKN-55-530	ICKN-55-533
Operating pressure (bar)	3 ... 8	3 ... 8	3 ... 8	3 ... 8	2 ... 8	3 ... 8	3 ... 8
Pilot pressure (bar)	3 ... 8	3 ... 8	3 ... 8	3 ... 8	2 ... 8	3 ... 8	3 ... 8
Flow rate (NI/min)	780	780	900	800	900	680	680
Response time (ms) at 6 bar	on: 16 off: 18	on: 13 off: 16	on: 16 off: 17	on: 16 off: 18	on: 14 off: 14	on: 14 off: 16	on: 14 off: 16
Weight (kg)	0.320	0.320	0.320	0.320	0.440	0.440	0.440

**Dimensions**
**ICKN-55-31x-HN**

**ICKN-55-51x-HN**

**ICKN-55-520-HN, ICKN-55-53x-HN**


1 = pressure inlet  
 2,4 = outlets  
 3,5 = exhausts

Plug socket (not included in scope of delivery) can be repositioned by 180°.  
 Solenoid coil can be repositioned.

**Accessories**



Plug sockets: page 6-14

# Series KNX-55

## NAMUR



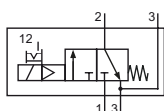
### Technical details

Connection	G1/4, Namur
Nominal size	6 mm
Temperature range	-30°C ... +80°C
Medium	Filtered, oil-free and dried compressed air according to ISO 8573-1:2010, Class 7:2:4, instrument air, free of aggressive additives. Alternatively the pressure dew point must be at least 10°C below lowest occurring ambient temperature.
Materials	Body: stainless steel 1.4571, seals: PU, NBR, inner parts: stainless steel 1.4305
Protection	IP 65 according to EN 60529
	Valves in accordance with 2014/34/EU (ATEX) available. (Chapter 13)

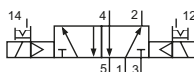
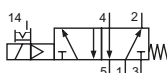


Electrically operated spool valve. The manual override is detent and is operated by screwdriver. The location pin, screws and seals are included.

### 3/2-way valve



KNX-55-311-HN-xxx  
3/2-way, single solenoid, mechanical spring return, NC



### 5/2- and 5/3-way valves

KNX-55-511-HN-xxx  
5/2-way, single solenoid, mechanical spring return

KNX-55-520-HN-xxx  
5/2-way, double solenoid

Please complete: xxx = electrical option

### Electrical options

Nominal voltage	Power consumption	Specifics	Plug connection <sup>*1</sup>	-xxx
24 V DC	4.2 W		Form B industrial norm	-F42

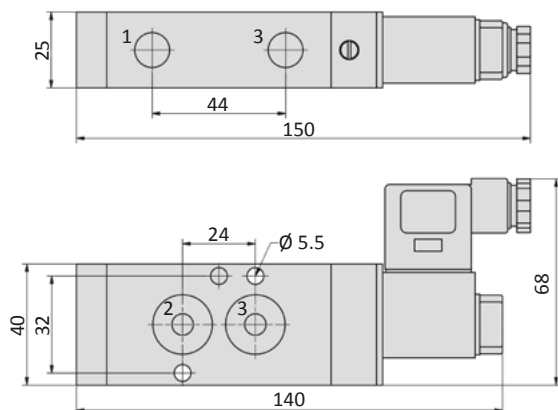
<sup>\*1</sup> Plug socket not included, suitable plug sockets see page 6-14.

### Technical data

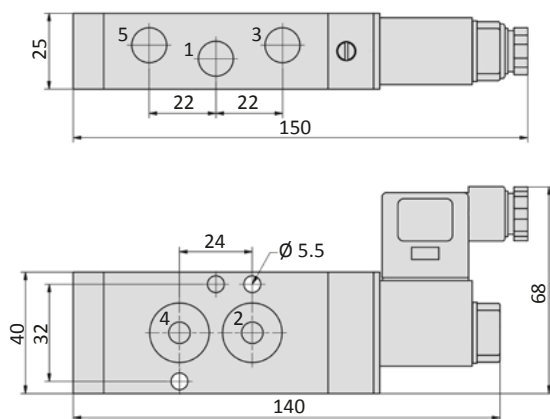
Model-no.:	KNX-55-311	KNX-55-511	KNX-55-520
Operating pressure (bar)	3 ... 8	3 ... 8	3 ... 8
Pilot pressure (bar)	3 ... 8	3 ... 8	3 ... 8
Flow rate (NI/min)	1280	1060	1050
Response time (ms) at 6 bar	on: 13 off: 47	on: 12 off: 74	on: 14 off: 14
Weight (kg)	0.670	0.660	0.720

## Dimensions

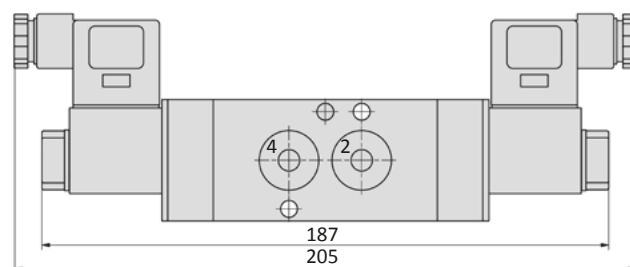
### KNX-55-311-HN



### KNX-55-511-HN



### KNX-55-520-HN



1 = pressure inlet  
2,4 = outlets  
3,5 = exhausts

Plug socket (not included in scope of delivery) can be repositioned by 180°.  
Solenoid coil can be repositioned.

## Accessories




Plug sockets: page 6-14

# Series PNX-55

## NAMUR



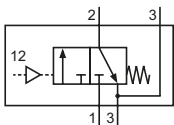
### Technical details

<b>Connection</b>	G1/4, Namur
<b>Nominal size</b>	6 mm
<b>Temperature range</b>	-30°C ... +80°C
<b>Medium</b>	Filtered, oil-free and dried compressed air according to ISO 8573-1:2010, Class 7:2:4, instrument air, free of aggressive additives. Alternatively the pressure dew point must be at least 10°C below lowest occurring ambient temperature.
<b>Materials</b>	Body: stainless steel 1.4571, seals: PU, NBR, inner parts: stainless steel 1.4305
<b>Protection</b>	IP 65 according to EN 60529
	Valves in accordance with 2014/34/EU (ATEX) available. (Chapter 13)

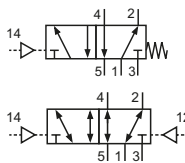


Pneumatically operated spool valve. The valve switches upon pressurization of the pilot port. The location pin, screws and seals are included.

### 3/2-way valve



PNX-55-311  
3/2-way, single pilot, mechanical spring return



### 5/2- and 5/3-way valves

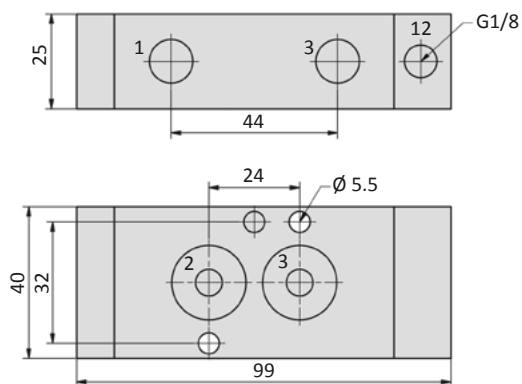
PNX-55-511  
5/2-way, single pilot, mechanical spring return  
PNX-55-520  
5/2-way, double pilot

### Technical data

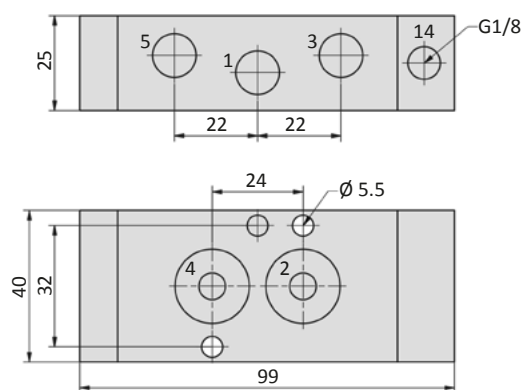
Model-no.:	PNX-55-311	PNX-55-511	PNX-55-520
<b>Operating pressure (bar)</b>	3 ... 8 bar	3 ... 8 bar	3 ... 8 bar
<b>Pilot pressure (bar)</b>	3 ... 8 bar	3 ... 8 bar	3 ... 8 bar
<b>Flow rate (l/min)</b>	1280	1060	1050
<b>Weight (kg)</b>	0.640	0.630	0.660

## Dimensions

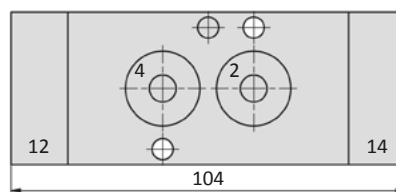
### PNX-55-311



### PNX-55-511



### PNX-55-520



1 = pressure inlet

2,4 = outlets

3,5 = exhausts

12,14 = pilot ports

Pilot ports can be repositioned by 180°.

## Plug sockets

### Form B industrial norm

<b>Overall width</b>	22 mm
<b>Contact distance</b>	11 mm
<b>Contacts</b>	2P + E
<b>Protection</b>	IP 65 according to EN 60529 requires a flat gasket
<b>For use with series</b>	ICK-09, ICK-10, KMX-09, KMX-10, ICKN-55, KNX-55

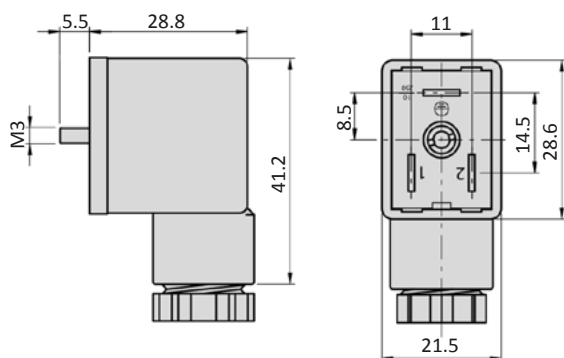


<b>Model-no.:</b>	28-ST-01	28-ST-04-112	28-ST-04-127	28-ST-06-112	28-ST-06-127	28-ST-06-K3-112*	28-ST-06-K3-127*
<b>Voltage (AC/DC)</b>	0 - 250 V	10 - 50 V	70 - 250 V	24 V	230 V	24 V	230 V
<b>Status indicator</b>	no	yes	yes	yes	yes	yes	yes
<b>Protective circuit</b>	no	no	no	yes (varistor)	yes (varistor)	yes (varistor)	yes (varistor)
<b>Connecting cable</b>	without	without	without	without	without	3 m	3 m
<b>Wire cross section</b>	max. 1.5 mm <sup>2</sup>	max. 1.5 mm <sup>2</sup>	max. 1.5 mm <sup>2</sup>	max. 1.5 mm <sup>2</sup>	max. 1.5 mm <sup>2</sup>	3 x 0.75 mm <sup>2</sup>	3 x 0.75 mm <sup>2</sup>
<b>Ø Connecting cable</b>	6 - 8 mm	6 - 8 mm	6 - 8 mm	6 - 8 mm	6 - 8 mm		

\* These plug sockets are fitted with integrated flat gaskets.

### Dimensions

#### Form B industrial norm



## Solenoid coils

### Form B industrial norm

Overall width	22 mm
Contact distance	11 mm
Contacts	2P + E
Protection	IP 65 according to EN 60529 with connected plug socket
Duty cycle	100 %
Temperature range*	-40°C ... +80°C
Voltage tolerance	± 10 %
For use with series	ICK-09, ICK-10, KMX-09, KMX-10, ICKN-55, KNX-55

\* The max. applicable operating temperature depends on the temperature specification of the used valve.



Model-no.:	23-SP-060-1-712
Voltage	24 V DC
Power consumption DC	4.2 W
Power consumption AC	-

### Dimensions

#### Form B industrial norm

